

LEADING REGENERATION

Geistlich
Biomaterials

How do you guarantee a solid foundation for complex bone augmentation?

Yxoss CBR®
manufactured by
ReOss®

EXACTLY
 like no other.



Exactly.

The combination of the best-in-class biomaterials with autogenous bone and 3-D printing technology offers you more bone in **complex bone augmentation**¹.



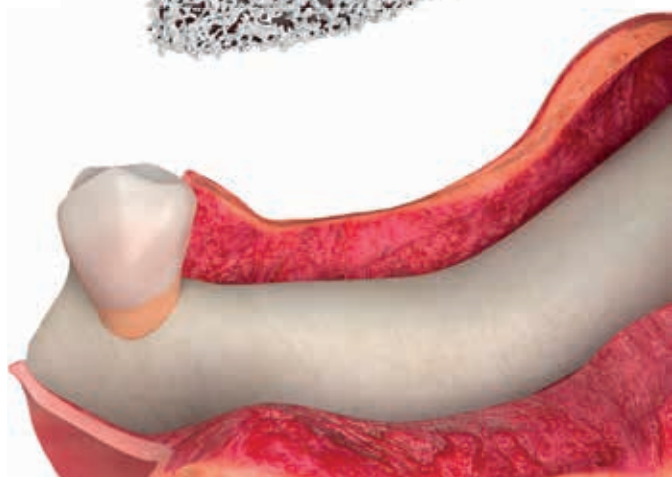
Geistlich Bio-Gide®



Yxoss CBR®



Geistlich Bio-Oss®



Innovative solution for regenerating **complex alveolar bone defects** by taking advantage of CBCT data combined with **3-D printing technology**

3-D



Opportunity to reduce surgery **time** without complex adaptations

Yxoss CBR®
manufactured by
ReOss®



High **stability** and space maintenance



Optional: Unique **integrated prosthesis positioning** in the surgical planning – **Yxoss CBR® Backward**



Easy Removal Design® with pre-defined breaking points for easy removal of Yxoss CBR® on re-entry



ReOss® calculates the necessary **augmentation volume** for your case planning

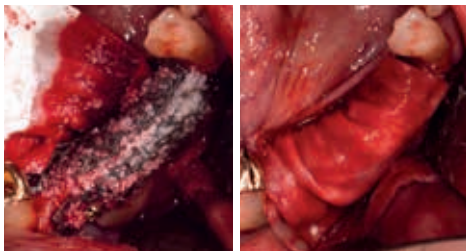
Geistlich Bio-Oss®

Stable scaffold for new bone formation, integration into the natural bone remodeling^{2,5} and slow resorption of Geistlich Bio-Oss® – the best prerequisite for a long-term implant survival rate⁷.

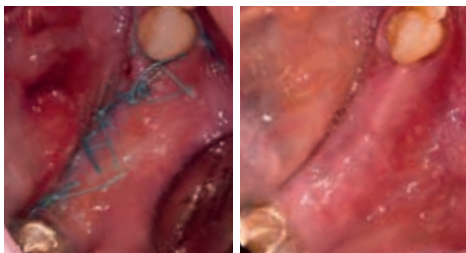


Geistlich Bio-Gide®

The carefully preserved native bilayer structure effectively protects the graft from soft tissue ingrowth⁸ and mechanical dislocation⁹. It reduces the risk of dehiscence^{8,9} – in order to support reliable hard tissue regeneration¹⁰.



Protection of the regenerative area by covering it with Geistlich Bio-Gide®



After 1 day and 10 days, good soft tissue healing.
Courtesy by Dr. Volkmann

How many millimetres of bone gain is possible by combining Geistlich Bio-Oss®

+ autologous bone

+ Yxoss CBR®?

100% of
implant
survival¹



6.5mm

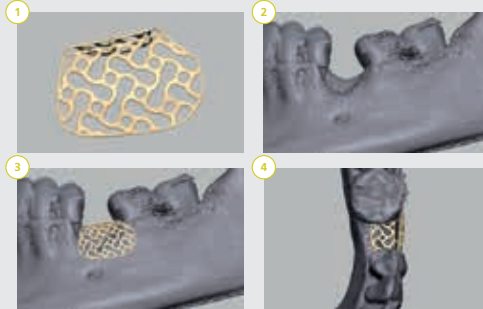
Vertical bone gain¹



5.5mm

Horizontal bone gain¹

How it works



Manufacturer of regenerative biomaterials
 © Geistlich Pharma AG
 Business Unit Biomaterials
 Bahnhofstrasse 40
 CH-6110 Wolhusen
 Phone +41 41 492 56 30
 Fax +41 41 492 56 39
 www.geistlich-biomaterials.com

- 1 Requests and offers:** Enter patient information in the "MyReOss" secure data entry portal and upload to ReOss®.
- 2 3-D Design preview:** Fast and simple on-line.
- 3 Evaluate and order:** Evaluate the 3-D design and place the order to fabricate the titanium scaffold.
- 4 Delivery:** Receive Yxoss CBR®, autoclave and use immediately.



New Technology
 Manufactured by ReOss®
Yxoss CBR®



Manufacturer of Yxoss CBR®
 ReOss® GmbH
 Talstrasse 23
 D-70794 Filderstadt
 www.reoss.eu

For more information:



References

- Sagheb, K. et al. (2017). Int J Implant Dent. 3(1), 36. (clinical)
- Orsini, G. et al. (2005). J Biomed Mater Res, B: Appl Biomater. 74(1), 448-57. (clinical)
- Piattelli, M. et al. (1999). Int J Oral Maxillofac Implants. 14(6), 835-40. (clinical)
- Sartori, S. et al. (2003). Clin Oral Implants Res. 14(13), 369-72. (clinical)
- Traini, T. et al. (2007). J Periodontol. 78(5), 955-961. (clinical)
- Orsini, G. et al. (2007). Oral Dis. 13(6), 586-93. (clinical)
- Jung, R. et al. (2013). Clin Oral Implants Res. 24(10), 1065-73. (clinical)
- Becker, J. et al. (2009). Clin Oral Implants Res. 20(7), 742-749. (clinical)
- Annen, BM. et al. (2011). Eur J Oral Implantol. 4(2), 87-100. (clinical)
- Schwarz, F. et al. (2014). Clin Oral Implants Res. 25(9), 1010-1015. (clinical)